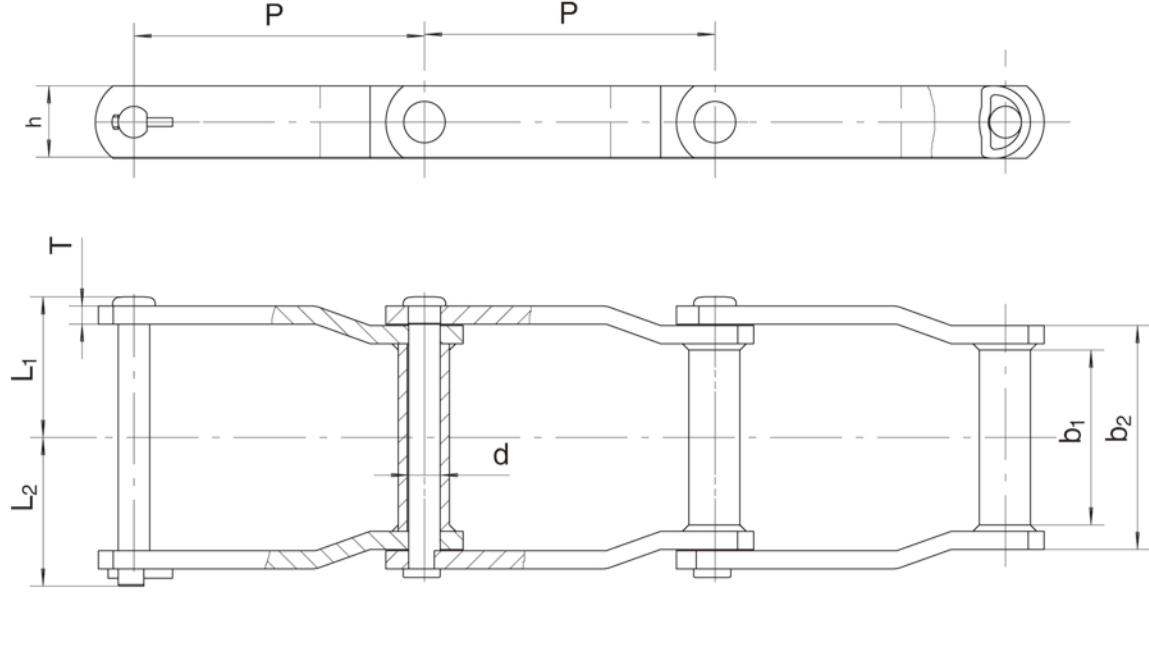


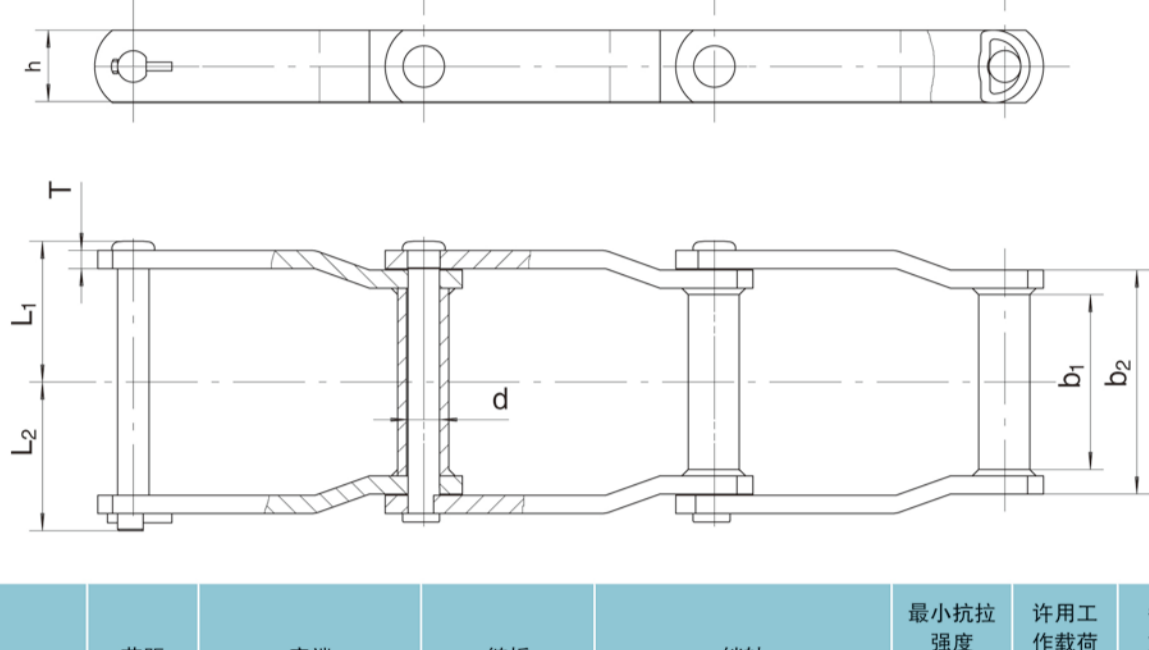
宽系列焊接弯板链 Wide Series Welded Crank-Link Mill Chains



链号 Chain No.	节距 Pitch	窄端 Narrow end		链板 Sidebars		销轴 Pin		最小抗拉强度 Ultimate tensile strength	许用工作载荷 Rated working load	每米重量 Weight per meter	
		P mm	b ₁ (min) mm	b ₂ (max) mm	h mm	T mm	d mm				L ₁ mm
WDR104	152.4	104.6	136.9	38.1	9.5	19.05	84.2	91	204	28.5	12
WDR110	152.4	228.6	263.9	38.1	9.5	19.05	147.8	154.5	204	28.5	17
WDR120	152.4	222.2	260.4	50.8	12.7	22.23	150.5	157	390	48	28.7
WDR112	203.2	228.6	263.9	38.1	9.5	19.05	147.8	154.5	204	28.5	14.1
WDR116	203.2	325.8	358.7	44.5	9.5	19.05	195.4	201.8	262	36.5	18.8
WDR118	203.2	334	378.45	50.8	12.7	22.23	210.7	217.2	390	48	32.1
WDR480	203.2	282.4	324.1	50.8	12.7	22.23	182.2	188.7	390	48	26.9
WDR2210	155.85	228.6	263.9	38.1	9.5	19.05	147.8	154.5	204	28.5	16.7
WDR2380	207.29	282.4	324.1	50.8	12.7	22.23	182.2	188.7	390	48	26.6

链条销轴经过热处理硬化
All pins of chain have been hardened through heat treatment.

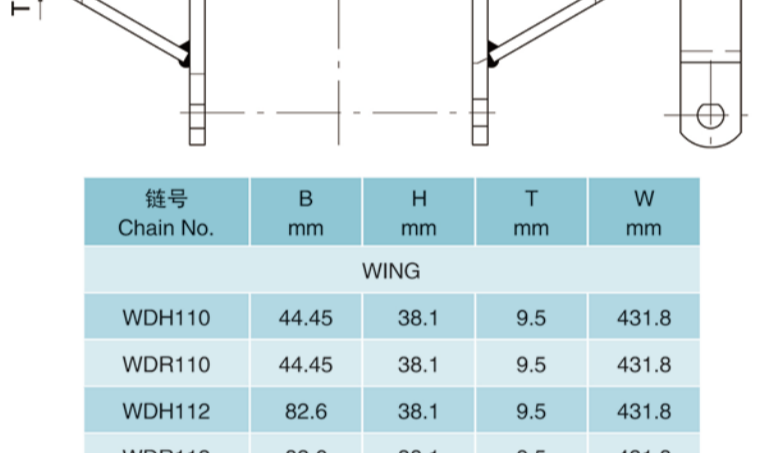
宽系列焊接弯板链 Wide Series Welded Crank-Link Mill Chains



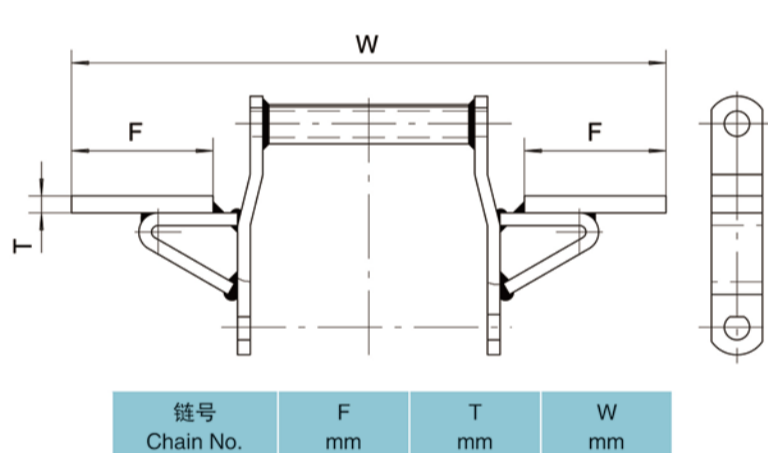
链号 Chain No.	节距 Pitch	窄端 Narrow end		链板 Sidebars		销轴 Pin		最小抗拉强度 Ultimate tensile strength	许用工作载荷 Rated working load	每米重量 Weight per meter	
		P mm	b ₁ (min) mm	b ₂ (max) mm	h mm	T mm	d mm				L ₁ mm
WDH104	152.4	104.6	136.9	38.1	9.5	19.05	84.2	91	310	44.5	12
WDH110	152.4	228.6	263.9	38.1	9.5	19.05	147.8	154.5	310	44.5	16.9
WDH120	152.4	222.2	260.4	50.8	12.7	22.23	150.5	157	500	66.8	28.7
WDH112	203.2	228.6	263.9	38.1	9.5	19.05	147.8	154.5	310	44.5	14.1
WDH116	203.2	325.8	358.7	44.5	9.5	19.05	195.4	201.8	320	51.2	18.8
WDH118	203.2	334	378.45	50.8	12.7	22.23	210.7	217.2	500	66.8	32.1
WDH480	203.2	282.4	324.1	50.8	12.7	22.23	182.2	188.7	500	66.8	26.9
WDH580	203.2	282.4	324.1	50.8	12.7	25.4	181.5	189.3	540	91.2	29.2
WDH680	203.2	282.4	330.2	50.8	16	25.4	190.7	198.5	540	91.2	32.5
WDH2210	155.85	228.6	263.9	38.1	9.5	19.05	147.8	154.5	310	44.5	16.70
WDH2380	207.29	282.4	324.1	50.8	12.7	22.23	182.2	188.7	500	66.8	26.6

链条销轴经过热处理硬化
All pins of chain have been hardened through heat treatment.

宽系列焊接弯板链附件 Wide Series Welded Crank-Link Mill Chains-Attachments

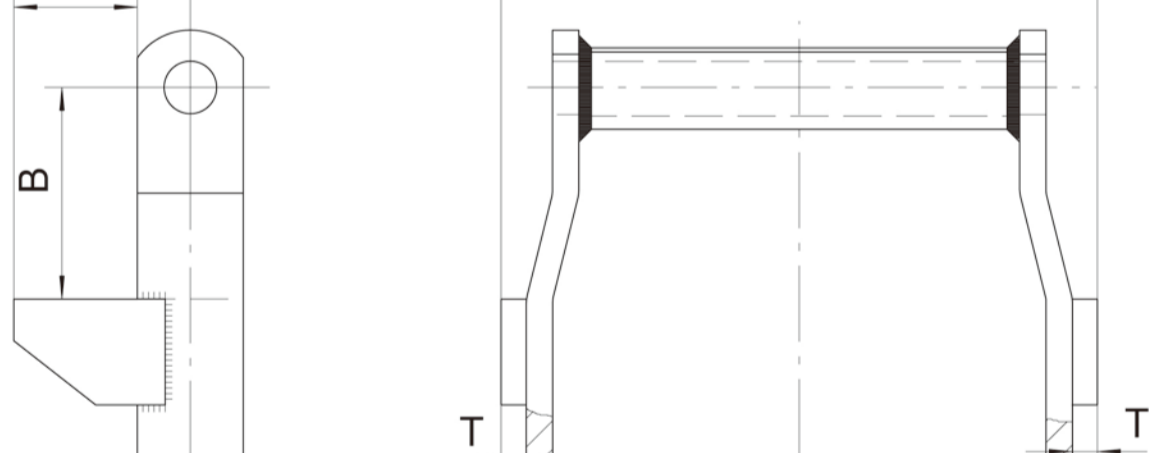


链号 Chain No.	B mm	H mm	T mm	W mm
WING				
WDH110	44.45	38.1	9.5	431.8
WDR110	44.45	38.1	9.5	431.8
WDH112	82.6	38.1	9.5	431.8
WDR112	82.6	38.1	9.5	431.8
WDH2210	57.2	38.1	9.5	431.8
WDR2210	57.2	38.1	9.5	431.8
WDH120	82.6	50.8	12.7	431.8
WDR120	82.6	50.8	12.7	431.8
WDH2380	82.6	50.8	9.5	558.8
WDR2380	82.6	50.8	9.5	558.8
WDH480	63.5	50.8	12.7	558.8
WDR480	63.5	50.8	12.7	558.8



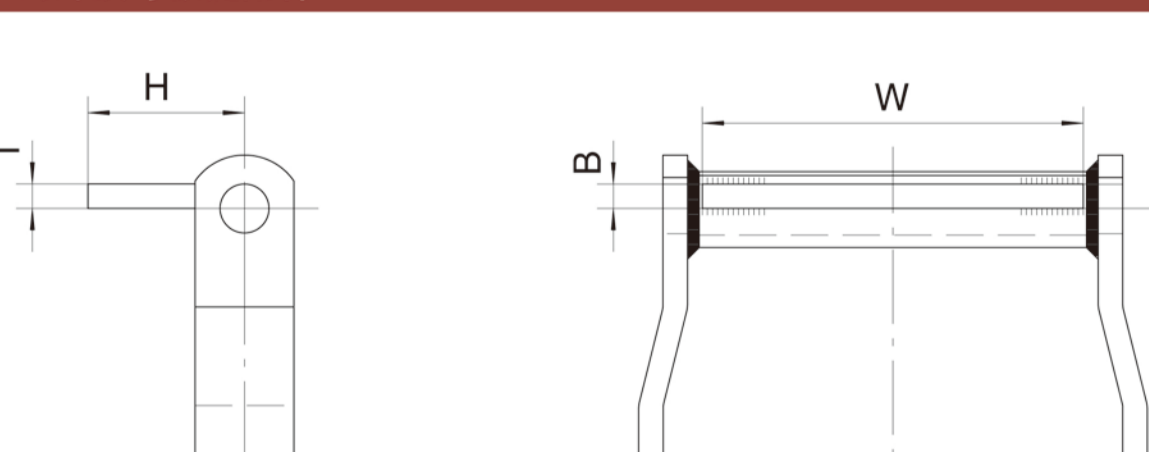
链号 Chain No.	F mm	T mm	W mm
W24			
WDH110	152.4	12.7	609.6
WDR110	152.4	12.7	609.6

宽系列焊接弯板链 Wide Series Welded Crank-Link Mill Chains



链号 Chain No.	B mm	H ₁ mm	H mm	T mm	W mm
RR					
WDH110	76.2	44.45	63.5	9.5	302.7
WDR110	76.2	44.45	63.5	9.5	302.7
WDH112	76.2	44.45	63.5	9.5	302.7
WDR112	76.2	44.45	63.5	9.5	302.7
WDH2210	76.2	44.45	63.5	9.5	302.7
WDR2210	76.2	44.45	63.5	9.5	302.7
WDH120	76.2	57.15	82.55	12.7	313.4
WDR120	76.2	57.15	82.55	12.7	313.4
WDH480	76.2	57.15	82.55	12.7	377
WDR480	76.2	57.15	82.55	12.7	377
WDH2380	76.2	57.15	82.55	12.7	377
WDR2380	76.2	57.15	82.55	12.7	377

宽系列焊接弯板链附件 Wide Series Welded Crank-Link Mill Chains-Attachments



C1、C3、C4

链号 Chain No.	B mm	H mm	T mm	W mm
C1				
WDH110	9.5	60.5	9.5	231.9
WDR110	9.5	60.5	9.5	231.9
WDH112	9.5	60.5	9.5	231.9
WDR112	9.5	60.5	9.5	231.9
C3				
WDH120	12.7	76.2	12.7	219.2
WDR120	12.7	76.2	12.7	219.2
WDH480	12.7	76.2	12.7	282.7
WDR480	12.7	76.2	12.7	282.7
C4				
WDH110	9.5	95.25	9.5	231.9
WDR110	9.5	95.25	9.5	231.9
WDH112	9.5	95.25	9.5	231.9
WDR112	9.5	95.25	9.5	231.9
WDH480	12.7	127	12.7	282.7
WDR480	12.7	127	12.7	282.7